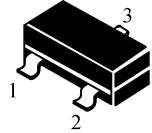


KEL[®]

S8050 S8050A M8050 MMT8050 SS8050 A6802

SOT-23

- 1. BASE
- 2. EMITTER
- 3. COLLECTOR



■FEATURES 特點

Low Frequency Power Amplifier 低頻功率放大
Suitable for Driver Stage of Small Motor 小馬達驅動
Complementary to 8550 与 8550 互补

■最大額定值(T_a=25°C)

CHARACTERISTIC 特性參數	Symbol 符號	Rating 額定值	Unit 單位
Collector-Base Voltage 集電極-基極電壓	V _{CBO}	40 25(C6802)	Vdc
Collect-Emmitter Voltage 集電極-發射極電壓	V _{CEO}	25 18(C6802)	Vdc
Emitter-Base Voltage 發射極-基極電壓	V _{EBO}	5.0	Vdc
Collector Current 集電極電流	I _c	500(S8050A,S8050) 1000(M8050) 1200(MMT8050) 1500(SS8050) 1800(C6802)	mAdc
Collector Power Dissipation 集電極耗散功率	P _C	225	mW
Junction Temperature 結溫	T _j	150	°C
Storage Temperature Range 儲存溫度	T _{stg}	-55~150	°C

■DEVICE MARKING 打標

S8050A=J3Y. S8050=J3Y M8050=Y1.
MMT8050=Y1 SS8050=Y.1 C6802=6802

■H_{FE} RANGE 放大倍數分檔

H_{FE} (85~150), (120~220)
(200~300), (280~400)

KEL 8050



S8050 S8050A M8050 MMT8050 SS8050 A6802

■ELECTRICAL CHARACTERISTICS 電特性

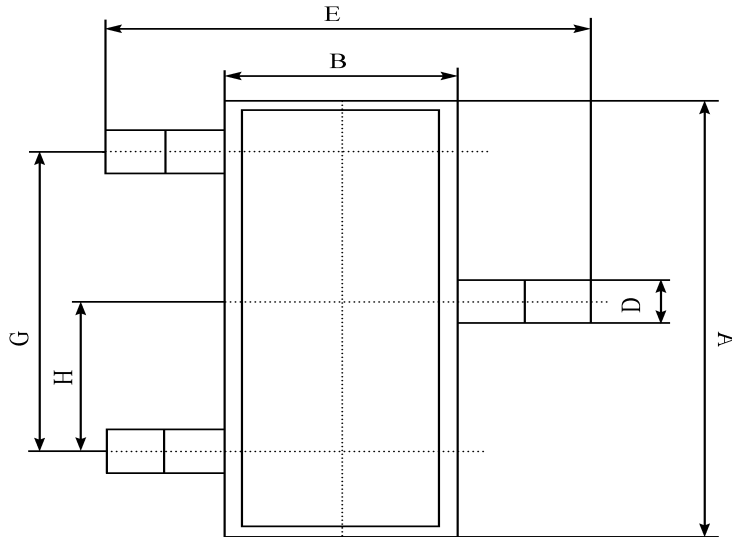
($T_A=25^{\circ}\text{C}$ unless otherwise noted 如無特殊說明，溫度為 25°C)

Characteristic 特性參數	Symbol 符號	Test Condition 測試條件	Min. 最小值	Typ. 典型值	Max. 最大值	Unit 單位
Collector Cutoff Current 集電極截止電流	I_{CBO}	$V_{CB}=30\text{V}, I_E=0$	—	—	0.1	μA
Emitter Cutoff Current 發射極截止電流	I_{EBO}	$V_{EB}=5\text{V}, I_C=0$	—	—	0.1	μA
Collector-Base Breakdown Voltage 集電極-基極擊穿電壓	$V_{(BR)CBO}$	$I_C=100\mu\text{A}$ (C6802)	40 (25)	—	—	V
Collector-Emitter Breakdown Voltage 集電極-發射極擊穿電壓	$V_{(BR)CEO}$	$I_C=10\text{mA}$ (C6802)	25 (18)	—	—	V
Emitter-Base Breakdown Voltage 發射極-基極擊穿電壓	$V_{(BR)EBO}$	$I_E=100\mu\text{A}$	5	—	—	V
DC Current Gain 直流電流增益	$H_{FE}(1)$	$V_{CE}=1\text{V}, I_C=100\text{mA}$	85	—	400	—
	$H_{FE}(2)$	$V_{CE}=1\text{V},$ $I_C=1800\text{mA}$ (C6802)	50	—	—	
		$I_C=800\text{mA}$ (M8050, MMT8050, SS8050)	40			
		$I_C=500\text{mA}$ (S8050) $I_C=500\text{mA}$ (S8050A)	40 30			
Collector-Emitter Saturation Voltage 集電極-發射極飽和壓降	$V_{CE(sat)}$	$I_C=500\text{mA}, I_B=50\text{mA}$	—	—	0.6	V
Base-Emitter Voltage 基極-發射極電壓	V_{BE}	$V_{CE}=1\text{V}, I_C=10\text{mA}$	—	0.8	1.0	V
Transition Frequency 特徵頻率	f_T	$V_{CE}=5\text{V}, I_C=10\text{mA}$	100	120	—	MHz
Collector Output Capacitance 輸出電容	C_{ob}	$V_{CB}=10\text{V}, I_E=0, f=1\text{MHz}$	—	13	30	pF

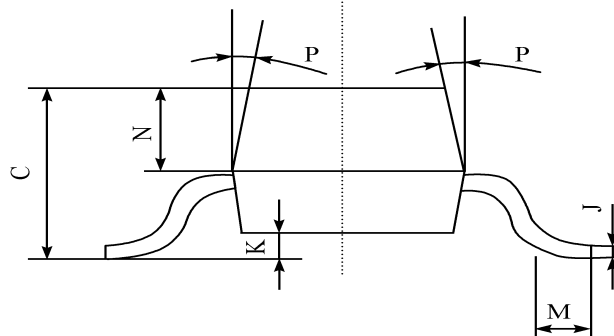


S8050 S8050A M8050 MMT8050 SS8050 A6802

■DIMENSION 外形封裝尺寸



序號	數值及公差
A	2.90 ± 0.10
B	1.30 ± 0.10
C	1.00 ± 0.10
D	0.40 ± 0.10
E	2.40 ± 0.20
G	1.90 ± 0.10
H	0.95 ± 0.05
J	0.13 ± 0.05
K	$0.00-0.10$
M	≥ 0.2
N	0.60 ± 0.10
P	$7 \pm 2^\circ$



This datasheet presents technical data of Tak Cheong's Silicon Rectifier Diodes. Complete specifications for the individual devices are provided in the form of datasheets. A comprehensive Selector Guide is included to simplify the task of choosing the best set of components required for a specific application. For additional information, please visit our website <http://www.takcheong.com>.

Although information in this datasheet has been carefully checked, no responsibility for the inaccuracies can be assumed by Tak Cheong. Please consult your nearest Tak Cheong's sales office for further assistance.

Tak Cheong reserves the right to make changes without further notice to any products herein to further improve reliability, function or design, cost and productivity.

KEL is registered trademarks of Tak Cheong Electronics (Holdings) Co., Ltd.