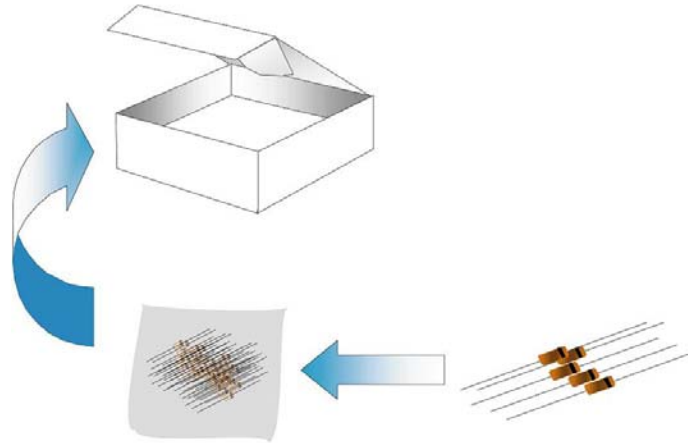


Bulk Outline

Switch intermediate bulk box: 250 mm x 80mm x 80mm
Zener/Schottky/Trigger intermediate bulk box: 190mm x 150mm x 65mm



| Quantity Per Plastic Bag | | | | |
|--------------------------|-----------------|-------------|----------------|---------------|
| Package Type | Switching Diode | Zener Diode | Schottky Diode | Trigger Diode |
| DO-34 | 1,000 pcs | 500 pcs | 500 pcs | 500 pcs |
| DO-35 | 1,000 pcs | 500 pcs | 500 pcs | 500 pcs |
| DO-41 | --- | 500 pcs | --- | --- |

Quantity Per Box

| Package Type | Switching Diode | Zener Diode | Schottky Diode | Trigger diode | Device Suffix |
|--------------|-----------------|-------------|----------------|---------------|---------------|
| DO-34 | 10,000 pcs | 10,000 pcs | 10,000 pcs | 10,000 pcs | No suffix |
| DO-35 | 10,000 pcs | 10,000 pcs | 10,000 pcs | 10,000 pcs | |
| DO-41 | --- | 5,000 pcs | --- | --- | |

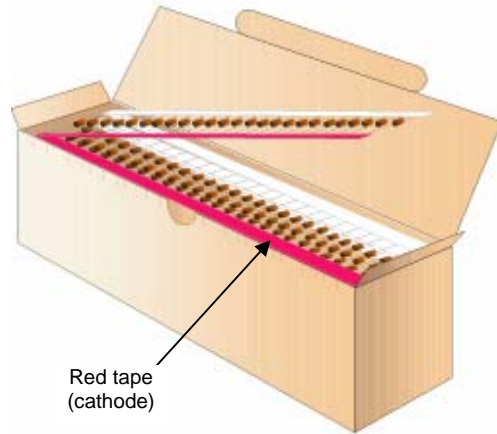
Axial-Lead Tape Packaging Standards

This axial-lead component's packaging requirements use in automatic testing and assembly equipment. And this standard practices for lead-tape packaging of axial-lead components meets the requirements of EIA Standard RS-296-D "Lead-taping of Components on Axial Lead Configuration for Automatic Insertion".

Tape & Ammo Outline

52mm:

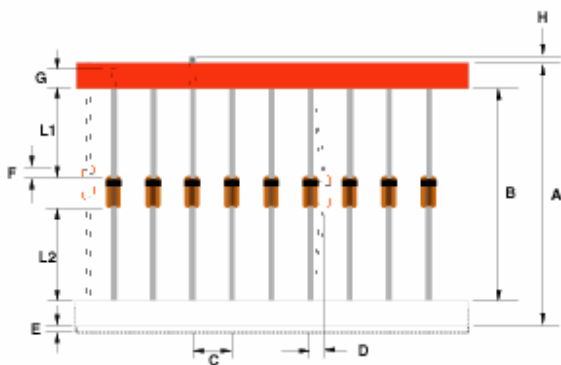
- Switching intermediate box: 260mm x 76mm x 122mm
- Zener/Schottky /Trigger intermediate box: 250mm x 80mm x 80mm
- 26mm intermediate box: 258mm x 49mm x 99mm



Quantity Per Ammo Box

| Package Type | Switching Diode | Zener Diode | Schottky Diode | Trigger Diode | Device Suffix |
|--------------|-----------------|-------------|----------------|---------------|---------------|
| DO-34 | (52mm) | 10,000 pcs | 5,000 pcs | 5,000 pcs | TB |
| | (26mm) | 5,000 pcs | 5,000 pcs | 5,000 pcs | T26B |
| DO-35 | (52mm) | 10,000 pcs | 5,000 pcs | 5,000 pcs | TB |
| | (26mm) | 5,000 pcs | 5,000 pcs | 5,000 pcs | T26B |
| DO-41 | (52mm) | --- | 3,000 pcs | --- | TB |

Taping Dimensions

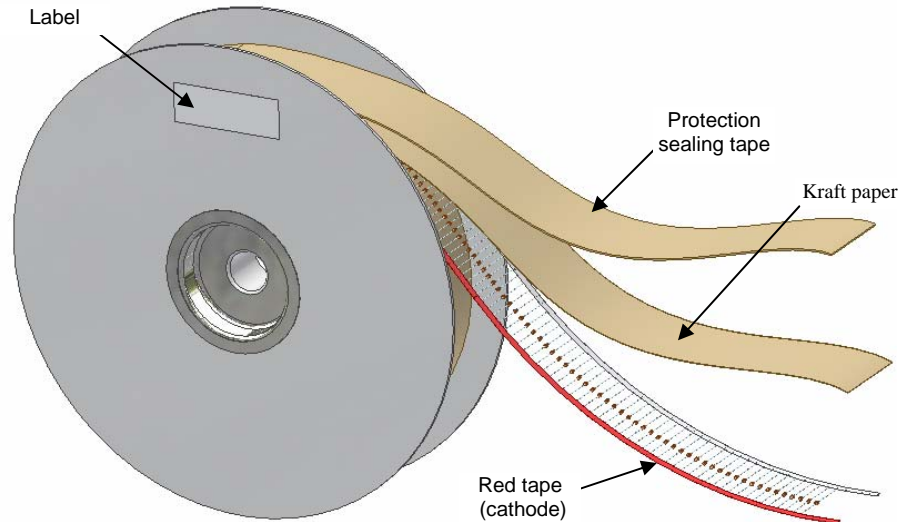


| Description | Millimeters | |
|------------------------|-------------|------------|
| | 52 | 26 |
| Standard Width | 52 | 26 |
| Tape Spacing (B) | 52.37±1.5 | 26±0.5 |
| Component Pitch (C) | 5.08 ± 0.4 | 5.08 ± 0.4 |
| Untaped Lead (L1 – L2) | ± 1.2 | ± 1.0 |
| Bent (D) | 1.2 Max | 1.2 Max |
| Tape Mismatch (E) | 0.75 Max | 0.75 Max |
| Glass Offset (F) | ± 0.69 | ± 0.69 |
| Taped Lead (G) | 2.0 Min | 2.0 Min |
| Lead Beyond Tape (H) | 0 | 0 |

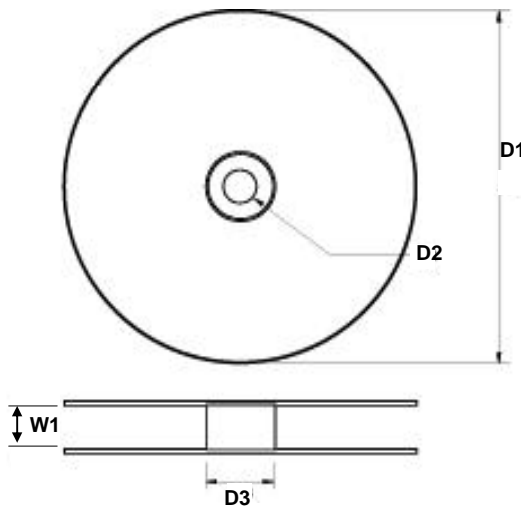
Axial-Lead Tape Packaging Standards

This axial-lead component's packaging requirements use in automatic testing and assembly equipment. And this standard practices for lead-tape packaging of axial-lead components meets the requirements of EIA Standard RS-296-D "Lead-taping of Components on Axial Lead Configuration for Automatic Insertion".

Tape & Reel Outline



Reel Dimensions



| DIM | Millimeters |
|-----|-------------|
| D1 | 356 |
| D2 | 30 |
| D3 | 84 |
| W1 | 75 |

Quantity Per Reel

| Package Type | Switching Diode | Zener Diode | Schottky Diode | Trigger Diode | Device Suffix |
|--------------|-----------------|-------------|----------------|---------------|---------------|
| DO-34 | 10,000 pcs | 10,000 pcs | 10,000 pcs | 10,000 pcs | TR |
| DO-35 | 10,000 pcs | 10,000 pcs | 10,000 pcs | 10,000 pcs | |
| DO-41 | --- | 5,000 pcs | --- | --- | |